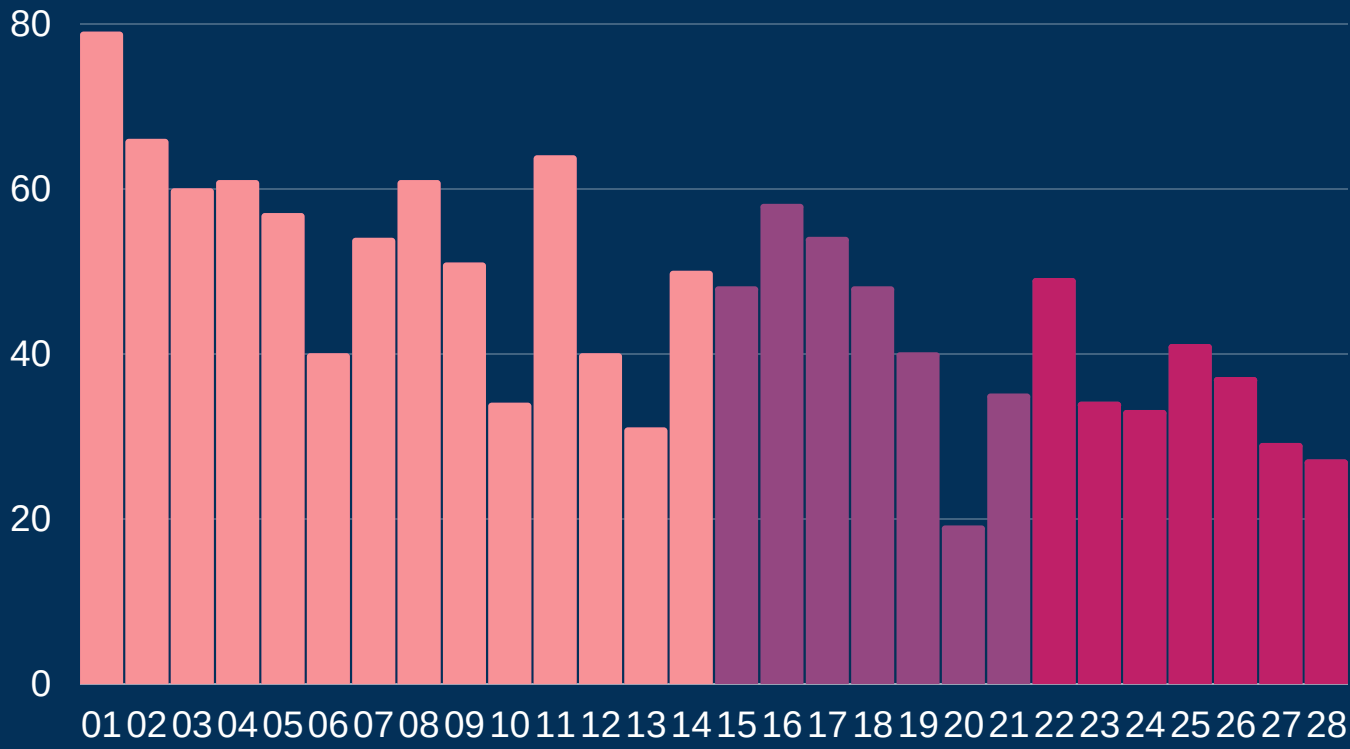




# Newcastle COVID cases

Total daily cases



February

Figures based on provisional data

Wednesday 3 March 2021

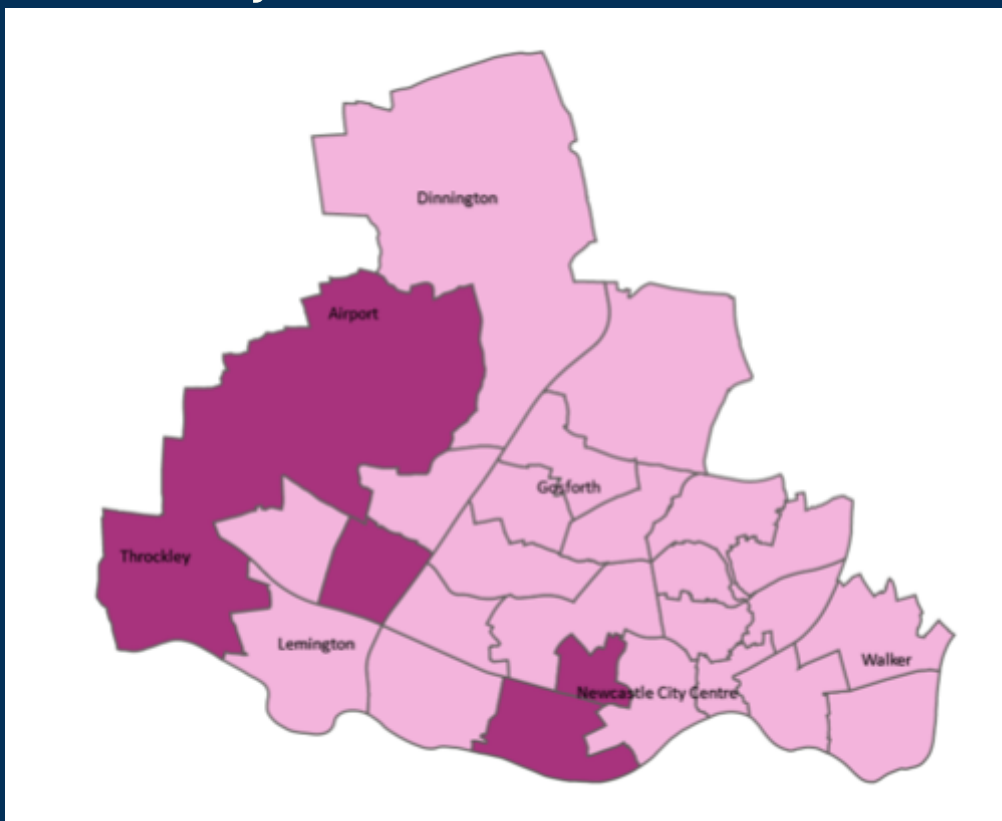
↓	New cases in last 7 days	250
↓	New cases in previous 7 days	302

Case rate per 100,000 population

↓	Newcastle	83
↓	LA7	95
↓	North East	100
↓	England	80

\*arrows show whether figure is up, down or the same as the previous 7 days. Figures are accurate at time of publishing and based on national Public Health England data.

## Case rate by ward



### Map indicator

Adjusted 14-day rate per 100k population to 25 February 2021

- 0-150
- 150-300

### Vaccinations

North East and Yorks total    **First dose**    2.68m

01 March

### Hospital

Data (UK)

**12,748**

Total number COVID-19 patients in hospital in UK as of 28 Feb

### Deaths

Newcastle residents

7 days to 19 Feb	
Total	56
Cause: COVID-19	7

7 days to 12 Feb	
Total	65
Cause: COVID-19	14