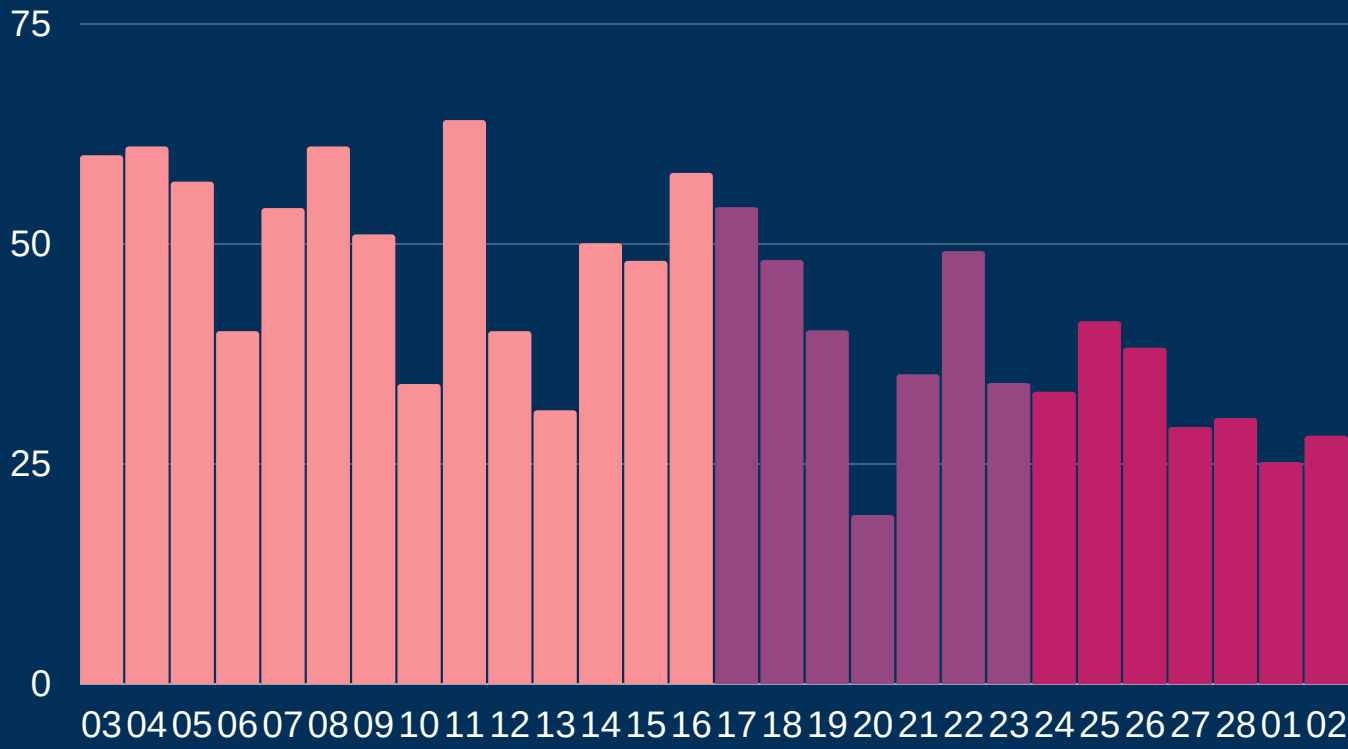




Newcastle COVID cases

Total daily cases



February - March

Figures based on provisional data

Friday 5 March 2021

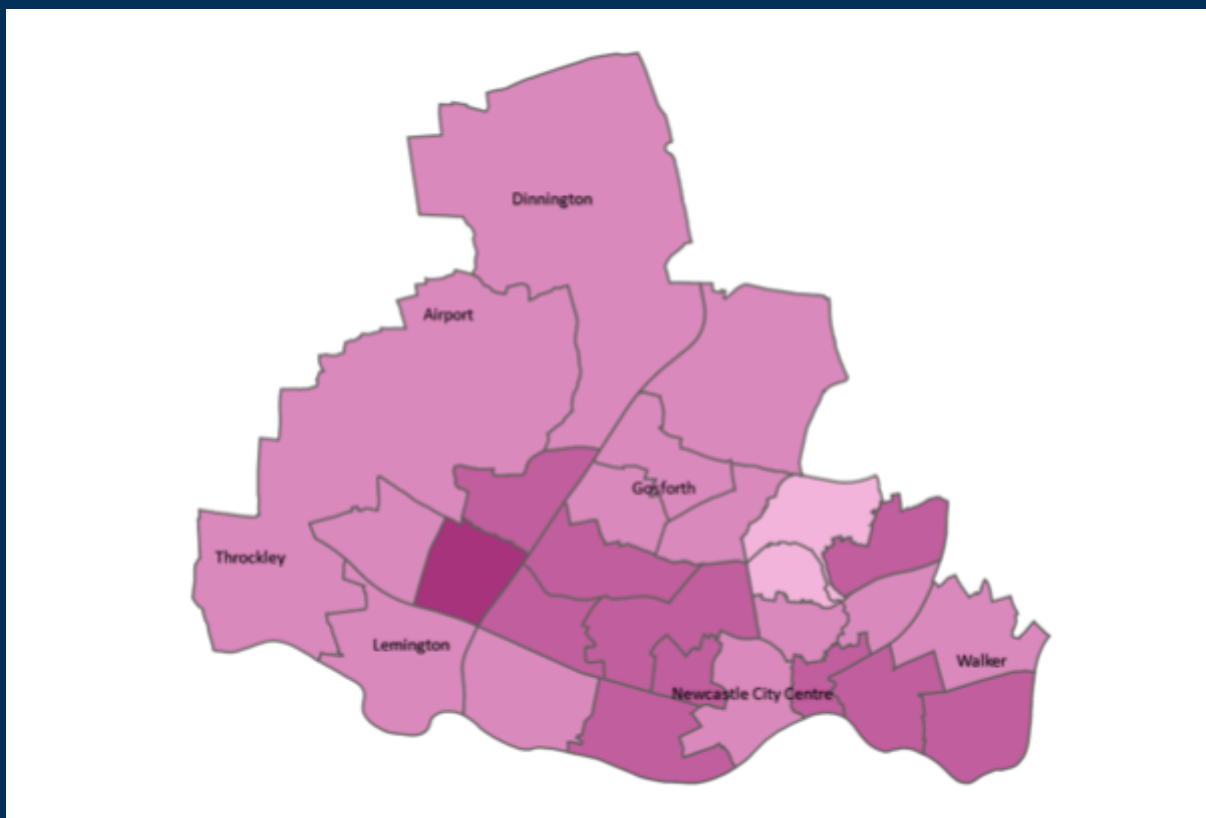
➔	New cases in last 7 days	224
⬇️	New cases in previous 7 days	279

Case rate per 100,000 population

➔	Newcastle	74
⬇️	LA7	86
⬇️	North East	91
⬇️	England	68

*arrows show whether figure is up, down or the same as the previous 7 days. Figures are accurate at time of publishing and based on national Public Health England data.

Case rate by ward



Map indicator

Adjusted 14-day rate per 100k population to 02 March 2021

- 0-50
- 50-100
- 100-150
- 150-300



Vaccinations

North East and Yorks total First dose 2.74m
03 March



Hospital

Data (UK) 12,136
Total number COVID-19 patients in hospital in UK as of 02 March



Deaths

Newcastle residents

7 days to 19 Feb

Total 56

Cause: COVID-19 7

7 days to 12 Feb

Total 65

Cause: COVID-19 14