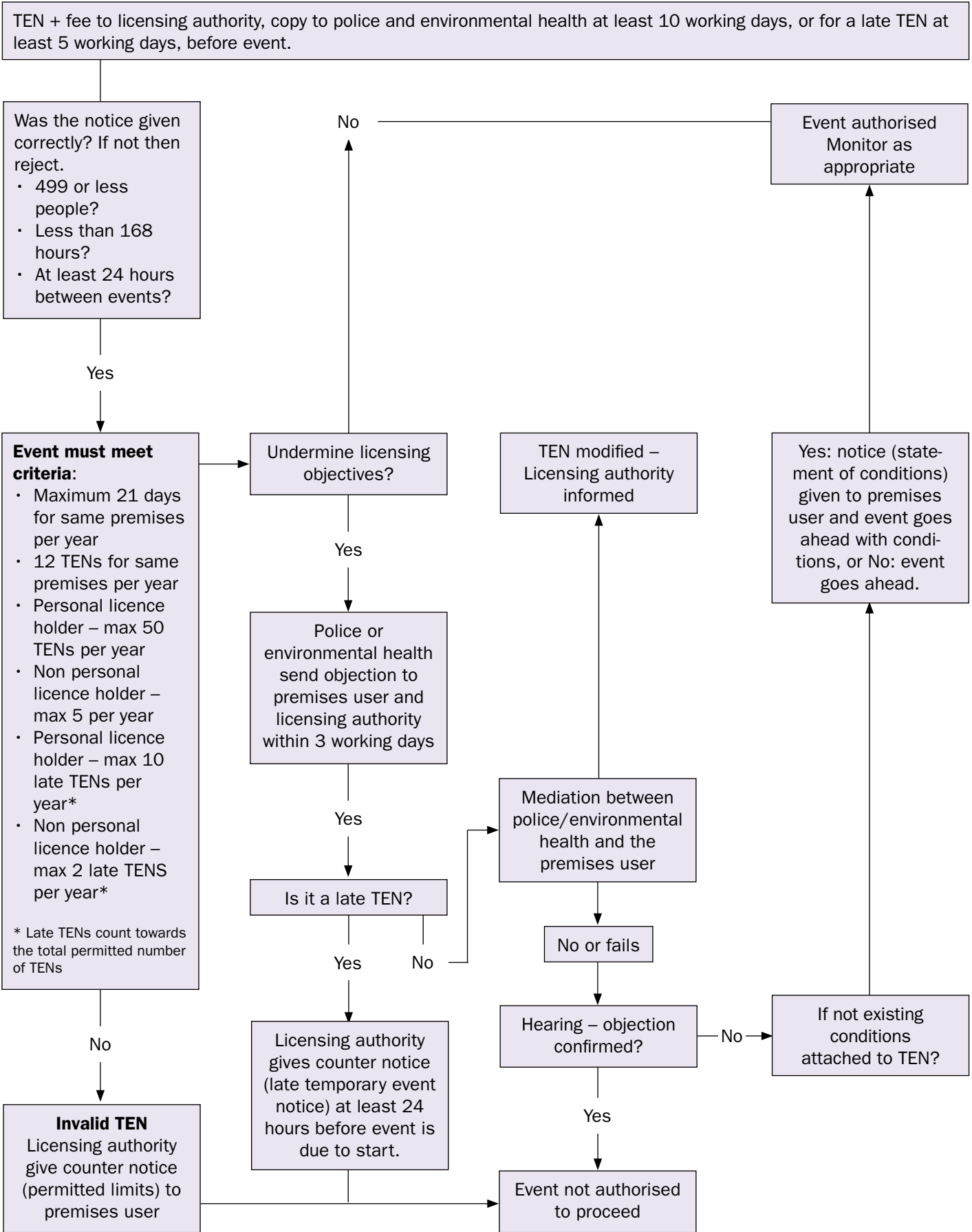


TENS FLOW DIAGRAM



Note. The content of this chart is for illustrative purposes only, and its publication at this stage is intended to assist licensing authorities in their preparation for changes to the Licensing Act 2003 being introduced by Part 2 of the Police and Social Responsibility Act 2011. The content of this document broadly reflects, but is not the statutory guidance (or a revised version of it) issued by the Secretary of State under section 182 of the Licensing Act 2003; as such, there should be no reliance upon it for any purpose. Revised statutory guidance will be laid in Parliament and available on the Home Office website on 25 April 2012, the date on it will come into force.