

BRANDLING VILLAGE



Date of Designation

04 October 1976

Planning guidance

Brandling Village Character Statement was adopted as Planning Guidance in December 2001. The Management Plan was adopted as a Development Guidance Note in May 2005.

Reasons for designation

To reinforce existing local plan policies and protect the uniformity and architectural quality of the Victorian Terraces from unsympathetic home improvements by the individual occupants.

Description of the conservation area

Brandling Village contains some of the best examples of Victorian domestic architecture in the city. The residential terraces are set largely in a mature landscape with views over Exhibition Park and the Town Moor. The terraces range from polite Georgian buildings to later workers cottages and Arts and Crafts style housing. The design of the terraces is simple and restrained with an architectural integrity and uniformity.

Heritage assets

There are 36 grade II listed buildings in Brandling Village. St. Andrew's Cemetery is a grade II Registered Historic Park and Garden. There are 13 locally listed sites in the conservation area. See map, over.

Article 4 Directions

None

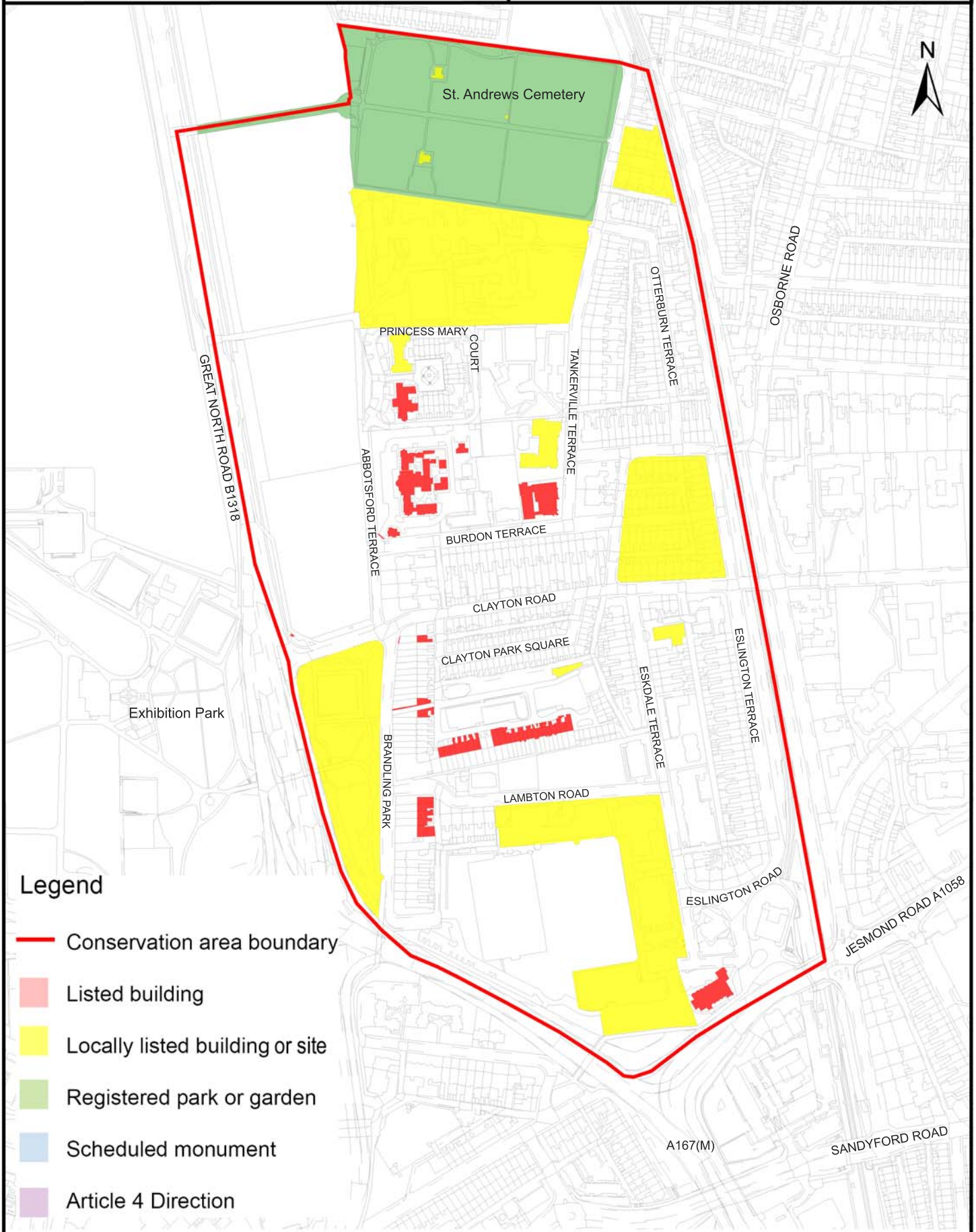
Contact information

For further information about the Brandling Village Conservation Area a useful starting point is the character statement. In addition, and for advice on development in the conservation area, contact:

Charlotte Foster

0191 211 5625

Charlotte.Foster@newcastle.gov.uk



Legend

- Conservation area boundary
- Listed building
- Locally listed building or site
- Registered park or garden
- Scheduled monument
- Article 4 Direction

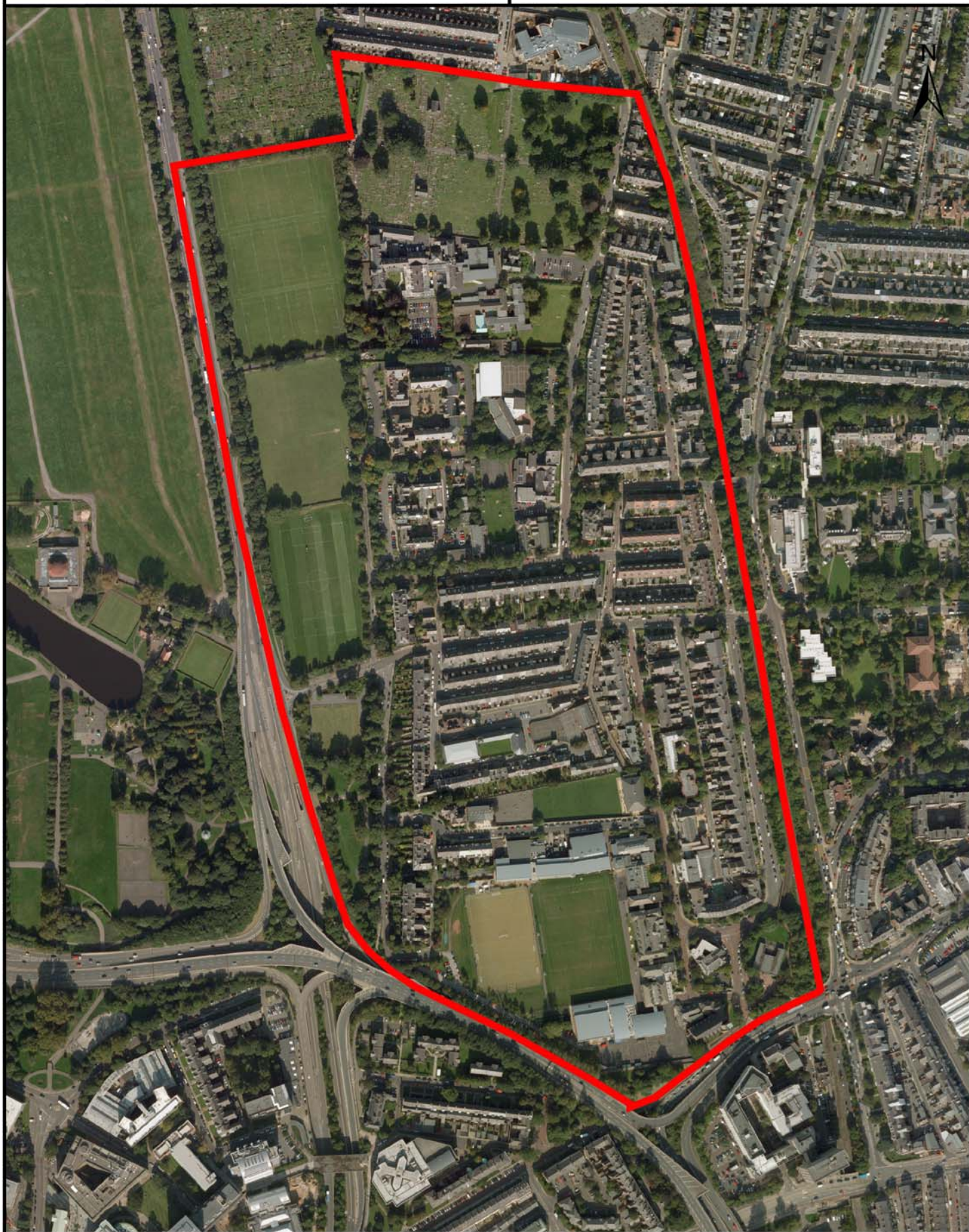
Harvey Emms, (BA Hons), MRTPI, Director of Strategic Housing, Planning & Transportation
Civic Centre, Barras Bridge, Newcastle upon Tyne, NE1 8PH. Tel. (0191) 2328520 Fax (0191) 2114998

Scale: 1:5000 @A4

Date: 15/06/2010

Drawn by: SA

www.newcastle.gov.uk



Harvey Emms, (BA Hons), MRTPI, Director of Strategic Housing, Planning & Transportation
Civic Centre, Barras Bridge, Newcastle upon Tyne, NE1 8PH. Tel. (0191) 2328520 Fax (0191) 2114998

Scale: 1:5000@A4

Date: 15/07/2010

Drawn by: SA

www.newcastle.gov.uk